
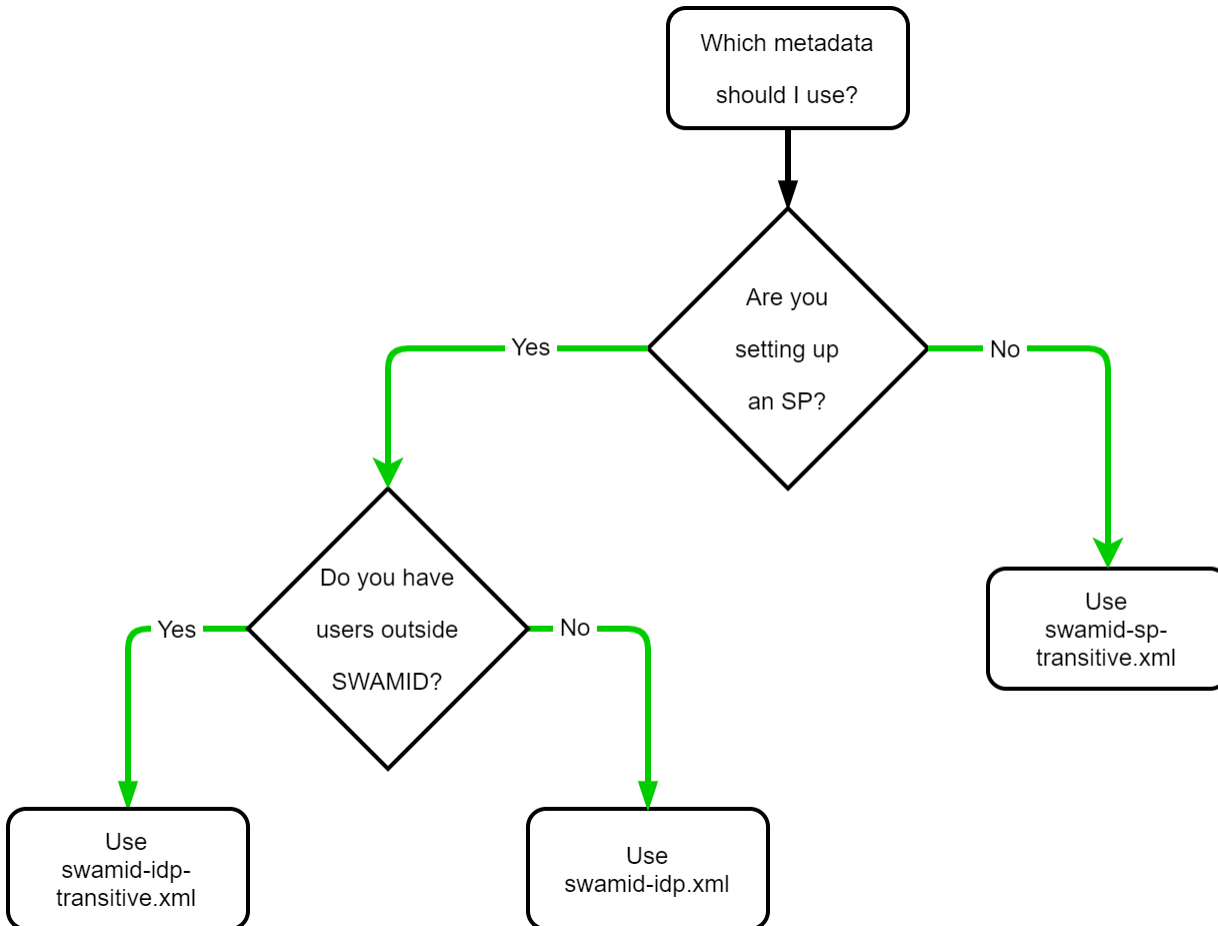


Choosing the right SAML metadata URL

 SWAMID publishes [multiple metadata-streams](#). Choose the right metadata according to the following process.



Recommendations

- All SP SHOULD use the swamid-idp-transitive.xml metadata feed.
- Green lines in the picture on the left represent the recommended choices for Service Providers (left) and Identity Providers (right).